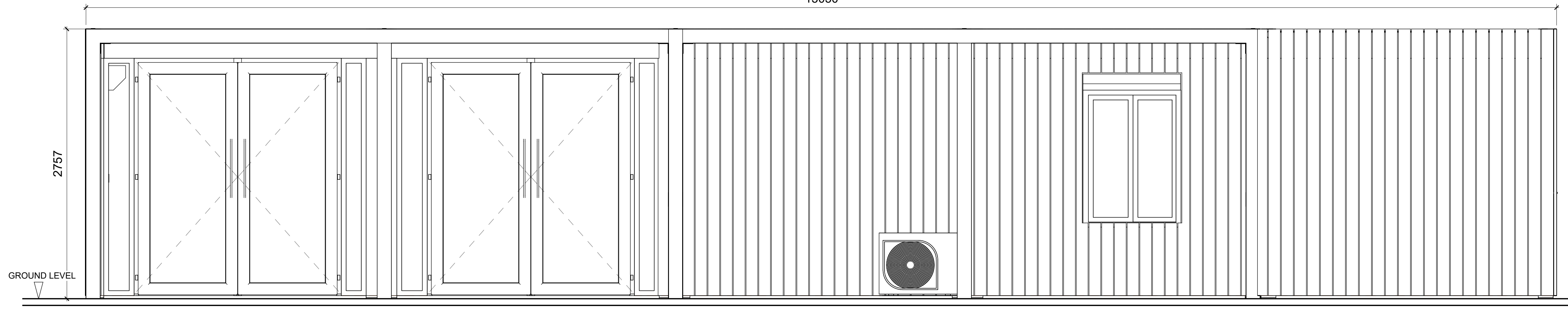
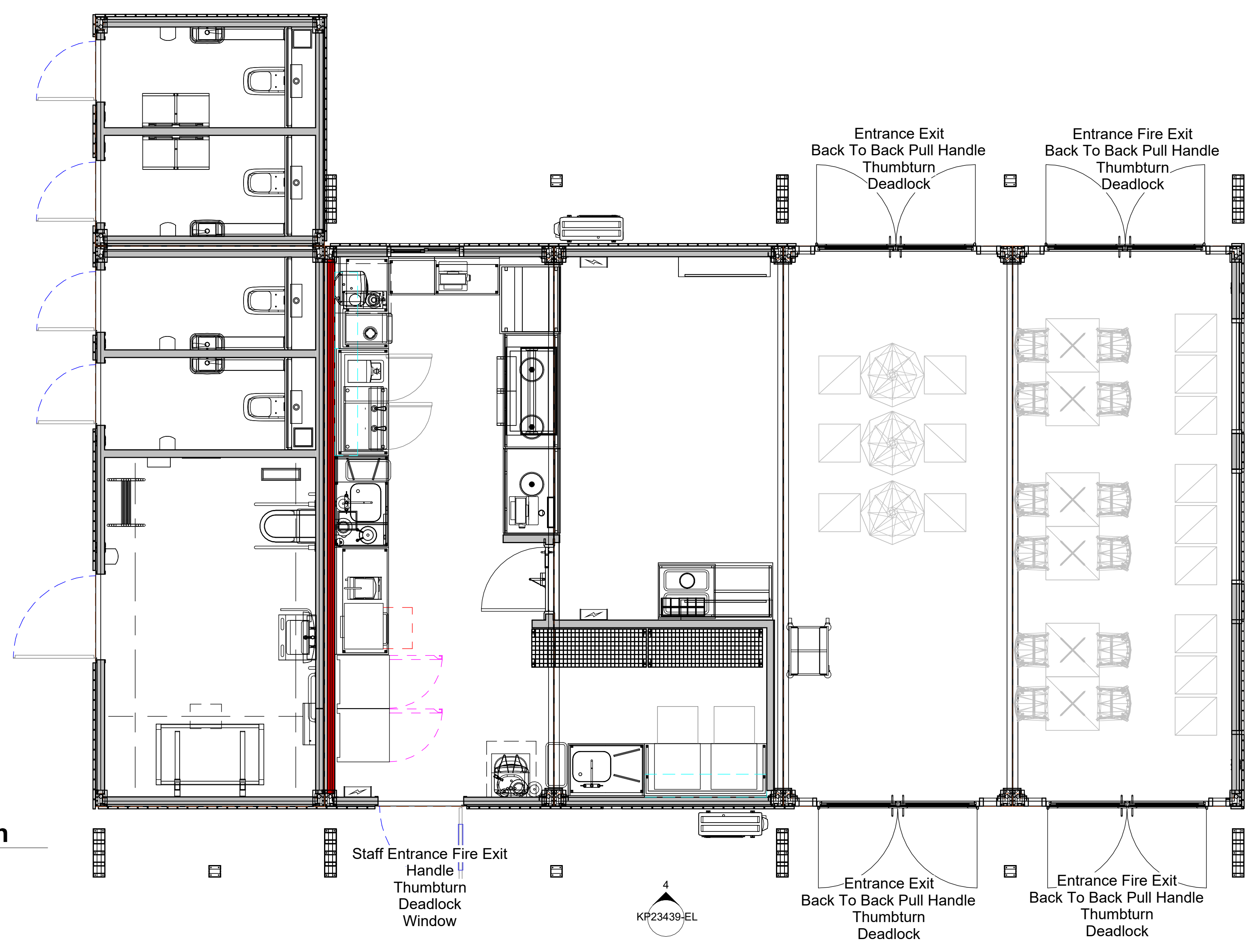
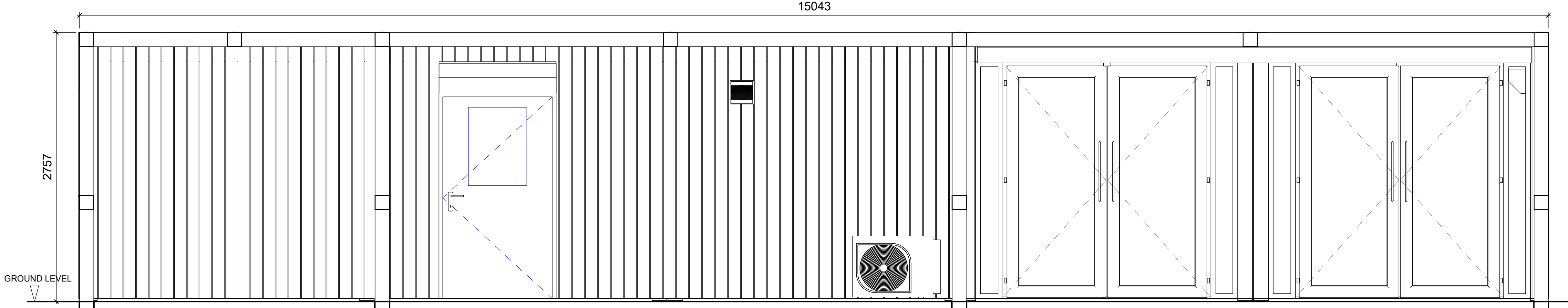


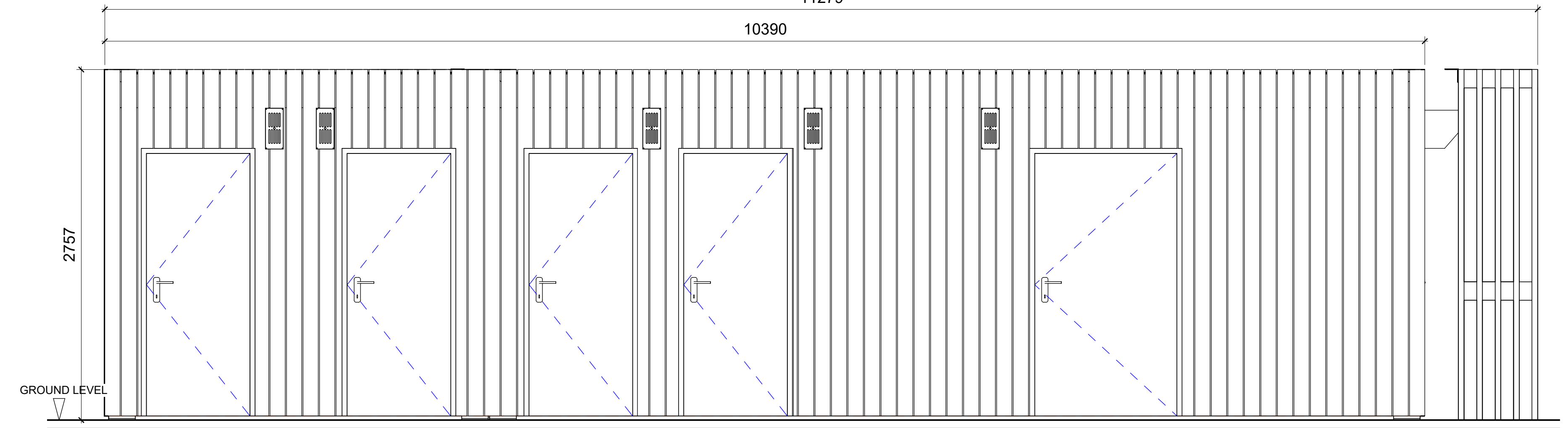
**1 Elevation Plan**  
1 : 40



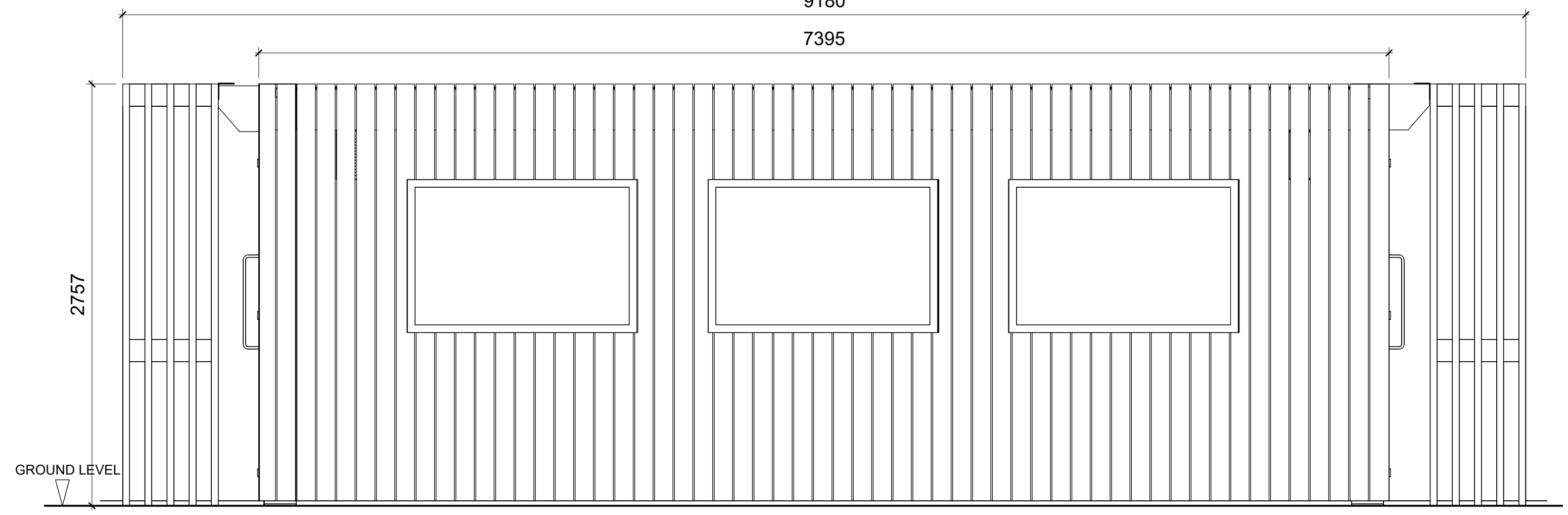
**2 Main Entrance**  
1 : 25



**4 Back Entrance**  
1 : 25



**3 Toilets**  
1 : 25



**5 Windows**  
1 : 25

**Building Components:**

**Frame**  
Cold rolled steel 4mm gauge paint finish  
C5m Ral 7016

**Floor**  
Floor finish Polysafe wood acoustix  
Finish on humidity resistant 20mm  
cement board. (Finished floor in back of  
house areas Polysafe Silver Birch)  
PU foam thickness 150mm  
**U-value 0.15W/m2K**

**Roof**  
Ceiling thermal conductivity  
**U-value 0.13W/m2K** loose mineral wool  
100mm PIR 100mm with 2 x 12.5mm GKF  
plasterboard painted finish Fire behaviour  
inline with  
**EN520:2004+A1:2009-08 A2 s1d0(B)**  
Roof C5m RAL 7016  
Interior ceiling RAL 9010

**Walls**  
Wall thermal conductivity  
**U-value 0.19W/m2K PIR100**  
External 0.6mm gauge steel  
Interior 0.5mm gauge steel  
Fire behaviour inline with  
**EN13501-1 Euro class Bs1d0**  
Exterior Finish C5m Ral 7016  
Interior Ral 9010

**Windows**  
Aluminium windows Argon filled glazing.  
**U-value 1.0W/m2K**

**Doors**  
Aluminium doors  
**U-value 1.3W/m2K**

**SBEM Notes**  
Comfort cooling specification to follow SBEM requirement

**Waste and Water Pipework Specification**

Soil PVCu BS EN 1329  
Waste PVCu BS EN 1566  
Waste ABS BS EN 1455-1  
Overflow PVCu BS EN 806-4  
Water supply BS EN 806

**All emergency lighting in accordance with BS5266**

**Front of house and kitchen lighting**  
LED ceiling light Ansell AERMLD2/60/DL Daylight 29W  
low glare IP44 Lumines delivered 3046lm Lm/W 105lm  
CRI Ra 80

**WC lighting**  
LED ceiling light, Ansell ADSILED2/CCT IP65 13W  
lumens delivered 1083lm (cool white) 1027lm (warm  
white) Lm/W 83lm (cool white) 79lm (warm white) CRI Ra  
80

**Fire exit signs**  
LED Lumen output 33lm LED colour Daylight 6500K CRI  
80 IP65 maintained

**WC Fans**  
Cubic extract fans airflow 85m3/hour 23ltr/sec Noise  
41dB(A)

**Fire Plan Note:**  
All electric kitchen - 'No open flame' Wall mounted  
stainless steel 304grade extract canopy with 350mm  
plate fan. 0.69m3/sec at 50Pa 63db(A)1m.  
The canopy will use make up air via natural ventilation.  
Canopy includes speed controller. Canopy has been  
designed to DW172

**Kitchen Wall Fan**  
Addvent AVX23N 668m2/hr 185airflow ltrs/sec noise  
53db(A)@2m power 45w

**WC to include internal locks**  
**DDA WC to include lever locks**

No.	Date	Description	MS	GO
1	18.10.23	Changed toilets location as per actual site plan.	MS	GO

**CLIENT** Studley Capital

**PROJECT** KPO/196703

**TITLE** Elevation

**STATUS** DESIGN DEVELOPMENT

**ORIGINATOR** JS **SCALE (ON A0)** As indicated  
**DRAWN BY** MS  
**CHECKED BY** **CREATED ON** 16.10.23

**DRAWING NO.** KP23439-EL **REVISION** 1



PKL Group (UK) Ltd  
This document and all information herein is confidential and the intellectual property of PKL Group (UK) Ltd. It is disclosed in confidence on terms that it will not be disclosed to any third party, used, sold, loaned, licensed, or reproduced in whole or in any part in any manner or form for manufacturing, tendering or for any other purpose without the written permission of PKL Group (UK) Ltd. The copyright is retained by PKL Group (UK) Ltd.

T:\ISSUED\Foodservice\2023\KP23439 - Studley Capital\01 - Drawings\KP23439.rvt

18/10/2023 12:34:45