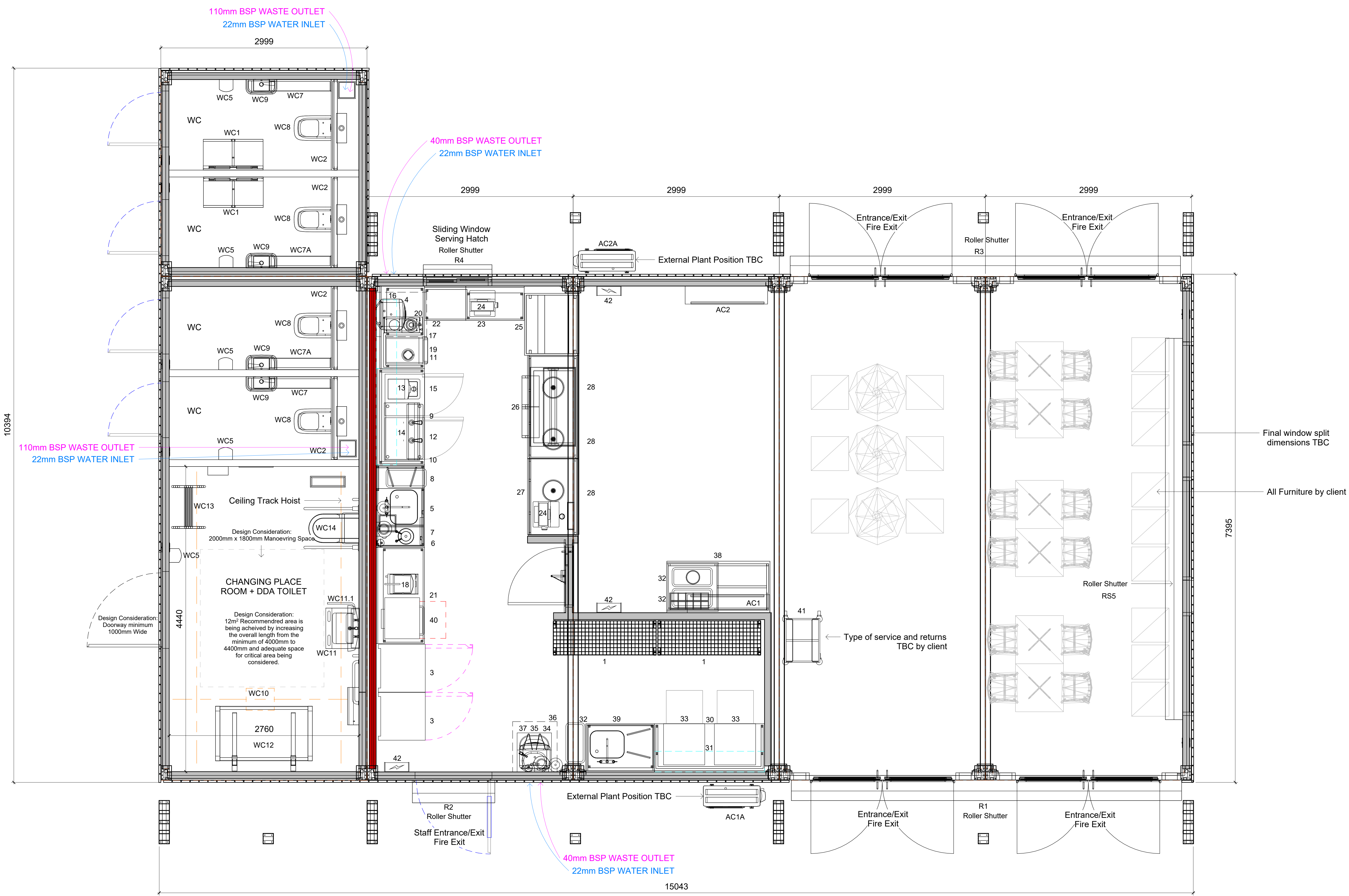


ID	Qty	Description
1	2	Chrome Wire Storage Racking - 4 Tier - Mobile
2	2	Upright Slim Fridge (+1/+4 °C)HJ400U
3.1	2	Castors For Fridge
4	1	Andris Lux Eco Water Heater 50 lt
5	1	Single Bowl Sink
5.1	1	Rear Upstand
5.3	1	Part Void to Underframe - Straight Tie Bar
5.4	1	Inset Wash Hand Basin
5.5	1	Basin Lever Taps
5.6	1	Drip Moulding - Central Angled
5.7	1	Sink Bowl 500 x 400 x 300 mm
5.8	1	Sink Mixer Lever Tap
5.9	1	Sink Drainer
5.10	1	Sliding Doors
6	1	Soap Dispenser
7	1	Paper Towel Dispenser
8	1	Slim Jim Bin
9	1	Preparation Table
9.1	1	Rear Upstand
9.2	1	Straight Tie Bar Frame
10	1	Wall Shelf (Box Section Brackets)
11	1	Blender
12	1	Undercounter Refrigerator
13	1	Beverage Water Boiler - Autofill
14	1	Double Group Coffee Machine (Model TBC By Client)
15	1	Undercounter Freezer
16	1	Wall Shelf (Box Section Brackets)
17	1	Preparation Table
17.1	1	Rear Upstand
17.2	1	Part Void to Underframe
18	1	Single Countertop Electric Contact Grill
19	1	Undercounter Ice Machine 45 Kg/Day
20	1	Pot Type Coffee Brewer
21	1	Preparation Table
21.1	1	Rear Upstand
21.2	1	Base Shelf Frame
22	1	Drop Section to One End
22.1	1	Rear Upstand
23	1	Preparation Table
23.1	1	Rear Upstand
23.2	1	Base Shelf Frame
24	2	Electronic Point of Sale - BY CLIENT
25	1	4 Tier Refrigerated Merchandiser With Roller Shutter - 1965 High - Front Loading
26	1	Podule Front Heated Display & Shelf
26.1	1	Laminated Panel Front
26.2	1	Laminated Panel Side
27	1	Podule Front Till
27.1	1	Laminated Panel Front
27.2	1	Laminated Panel Side
27.3	1	Cable Port/Cable Port
28	3	Pendant Single
30	1	Preparation Table
30.1	1	Rear Upstand
30.2	1	U-Shaped Tie Bar Frame
31	1	Wall Shelf (Box Section Brackets)
32	3	Slim Jim Bin
33	2	Undercounter Dishwasher
34	1	Janitor Sink
35	1	Paper Towel Dispenser
36	1	Andris Lux Eco Water Heater 50 lt
37	1	Soap Dispenser
38	1	Podule Cutlery Condiment Unit
38.1	1	Laminated Panel
38.2	1	Laminated Panel Side
38.3	1	Laminated Panel Front
38.4	1	Laminated Panel RHS
39	1	Single Bowl Sink
39.1	1	Rear Upstand
39.2	1	Sink Drainer
39.3	1	Sink Bowl 500 x 400 x 300 mm
39.4	1	Sink Mixer Lever Tap
39.5	1	Base Shelf Frame
40	1	Merrychef Oven Eikon E3
41	1	Tray Clearing Trolley
42	3	Flykiller
AC1	1	AC Evaporator 10kW
AC1A	1	Condenser Fused at 25amp
AC2	1	AC Evaporator 10kW
AC2A	1	Condenser Fused at 25amp
R1	1	Roller Shutter
R2	1	Roller Shutter
R3	1	Roller Shutter
R4	1	Roller Shutter Serving Hatch
RS5	1	Roller Shutter Internal
WC1	2	Baby Changer 141601
WC2	4	IPS WC Wall Panel System
WC5	5	Hand Dryer Stainless Steel 43721
WC7	2	WHB Pipe Cladding LHS Run Rack Compact Sink Only
WC7A	2	WHB Pipe Cladding RHS Run Rack Compact Sink Only
WC8	4	Vitra S20 Floor Standing WC/Vitra S20 Back to Wall Toilet - 5520L003-0075-B with hidden cistern, sensor flush and toilet set
WC9	4	Wash Hand Basin Compact 450 With DVS Sensor Tap
WC10	1	Generic full room cover XY tracked hoist system
WC11	1	Wash basin without overflow
WC11.1	1	Powered wash basin lifter, 300 mm height adjustable with lever control
WC12	1	Fixed nursing bench



Plan View



Perspective Views

No.	Date	Description	Dr'n	Ch'd
2	18.10.23	Changed toilets location as per actual site plan.	MS	GO
1	09.10.23	Added 2 toilets, 1 dish wash area and extended bays width.	MS	GO

CLIENT	Studley Capital
PROJECT	KPO/196703
TITLE	General Arrangement
STATUS	DESIGN DEVELOPMENT
ORIGINATOR	GO
SCALE (ON A0)	1 : 25
DRAWN BY	SH
CHECKED BY	GO
CREATED ON	12.09.23

KP23439-GA 2  
DRAWING NO. REVISION

PKL Group (UK) Ltd  
Malvern View Business Park  
Stella Way  
Bishops Cleeve  
Cheltenham  
Gloucestershire GL52 7DQ  
United Kingdom  
Tel: +44 (0) 1242 663000  
Fax: +44 (0) 1242 677819  
postbox@pkl.co.uk  
www.pkl.co.uk

A Division of Rental

PKL Group (UK) Ltd  
This document and all information herein is confidential and the intellectual property of PKL Group (UK) Ltd. It is disclosed in confidence on terms that it will not be disclosed to any third party, used, sold, loaned, licensed, or reproduced in whole or in any part in any manner or form for manufacturing, tendering or for any other purpose without the written permission of PKL Group (UK) Ltd. The copyright is retained by PKL Group (UK) Ltd.

T:\ISSUED\Foodservice\2023\KP23439 - Studley Capital\01 - Drawings\KP23439.rvt

18/10/2023 12:41:38